

Merryhill Road

Bushey, WD23 1FJ



Merryhill Road

Bushey, WD23 1FJ

£2,250 PCM

- Available NOW
- Two Double Bedrooms
- Lounge/Dining Room
- Balcony overlooking grounds
- Kitchen/Breakfast Room with integrated appliances
 - En Suite & Family Bathroom
 - Ground Floor Apartment
- Three acres of delightful communal grounds
 - Two allocated parking spaces
 - Council tax band F & EPC Rating B





Merryhill Road

Bushey, WD23 1FJ

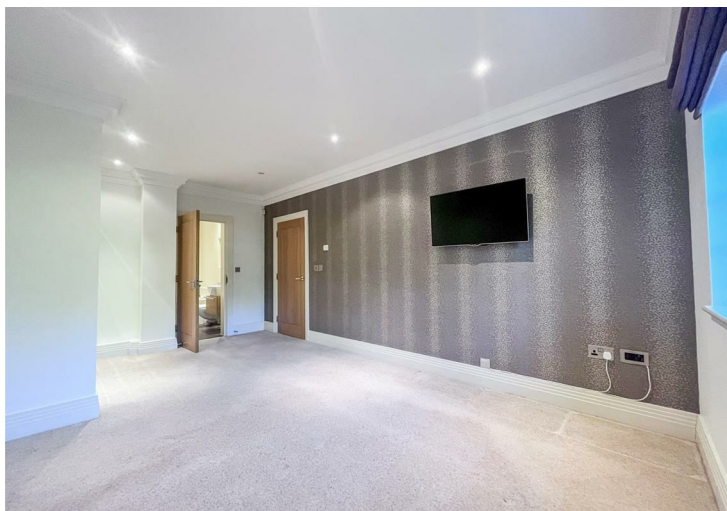
JW & Co proudly presents this immaculate two-bedroom, two-bathroom ground floor apartment situated in a prestigious development surrounded by expansive private grounds. Ideally located for convenient access to both Bushey and Bushey Heath, as well as Watford with its array of shopping and transport amenities.

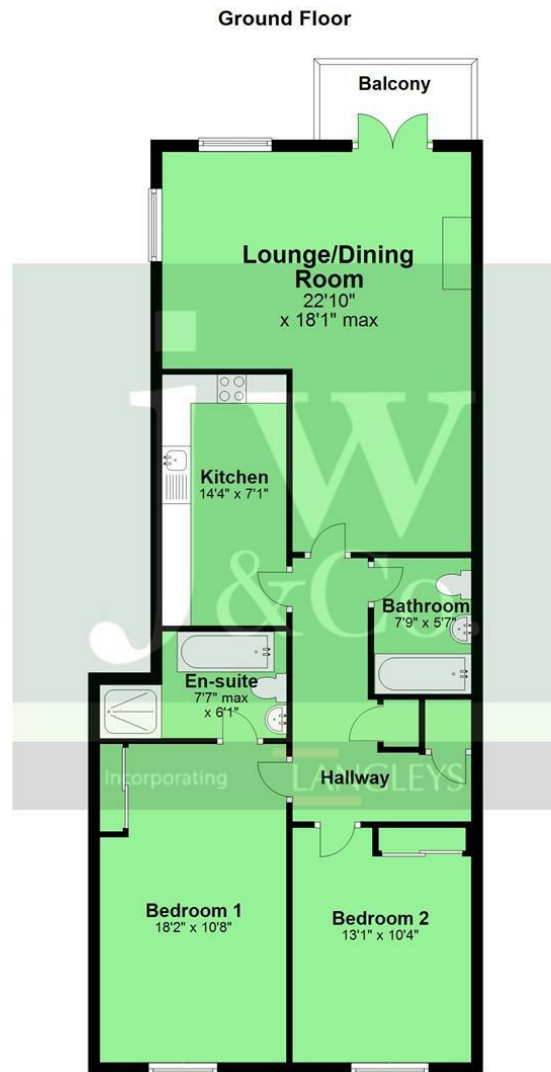
Upon entering, a spacious hallway welcomes you, leading to a modern kitchen/breakfast room equipped with integrated appliances. The generously sized lounge/dining room features patio doors opening to a balcony offering picturesque views of the communal grounds. The principal bedroom suite boasts fitted wardrobes and an En suite bathroom complete with a separate shower. Bedroom two also includes fitted wardrobes, accompanied by a family bathroom.

The standout feature of this luxury gated development is undoubtedly its exquisite communal gardens, spanning approximately 3 acres of private grounds set within a greenbelt environment. Additionally, the property benefits from two allocated parking spaces.

Available NOW

Five week deposit = £2596.00





JW&Co St Albans
3 London Road, St Albans, Hertfordshire, AL1 1LA
01727 844444
stalbands@jwandco.co.uk

Lounge/dining room
22'10" x 18'3" max (6.96m x 5.56m max)

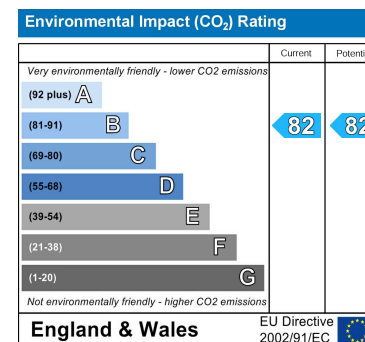
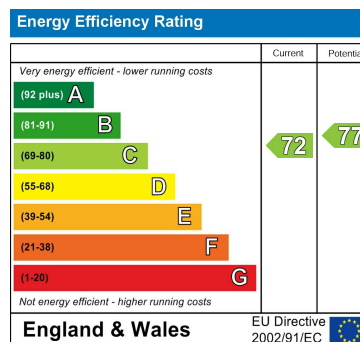
Kitchen
14'4" x 7'1" (4.37m x 2.164m)

Principal Bedroom
18'2" x 10'8" (5.54m x 3.25m)

En suite shower room
7'7" x 6'1" (2.31m x 1.85m)

Bedroom two
13'1" x 10'4" (3.99m x 3.15m)

Bathroom
7'9" x 5'6" (2.36m x 1.68m)



In accordance with the Consumer Protection from Unfair Trading Regulations 2008 (CPRs) and the Business Protection from Misleading Markets Regulations 2008 (BPRs) JW&CO have prepared these property particulars as a general guide to a broad description of the property. JW&CO as agents for the vendor or lessor and for themselves give notice that (a) these particulars are not intended to constitute part of an offer or contract (b) have not carried out a structural survey and the services, appliances and fittings have not been tested (c) all measurements, photographs, distances and floor plans referred to are given as a guide only and should not be relied upon for the purchase of fixtures and fittings (d) tenure details, service charges and ground rent (where applicable) are given as a guide only and should be checked and confirmed by your solicitor prior to exchange of contracts (e) neither the vendor nor any person in the employment JW&CO has any authority to make or give any representation or warranty whatsoever in respect of the property.